



DENVER POLICE CRIME LAB

DENVER, COLORADO

JACKIE EURY

TECHNICAL REPORT IV.A

SHAWN GOOD

BUILDING | OVERVIEW

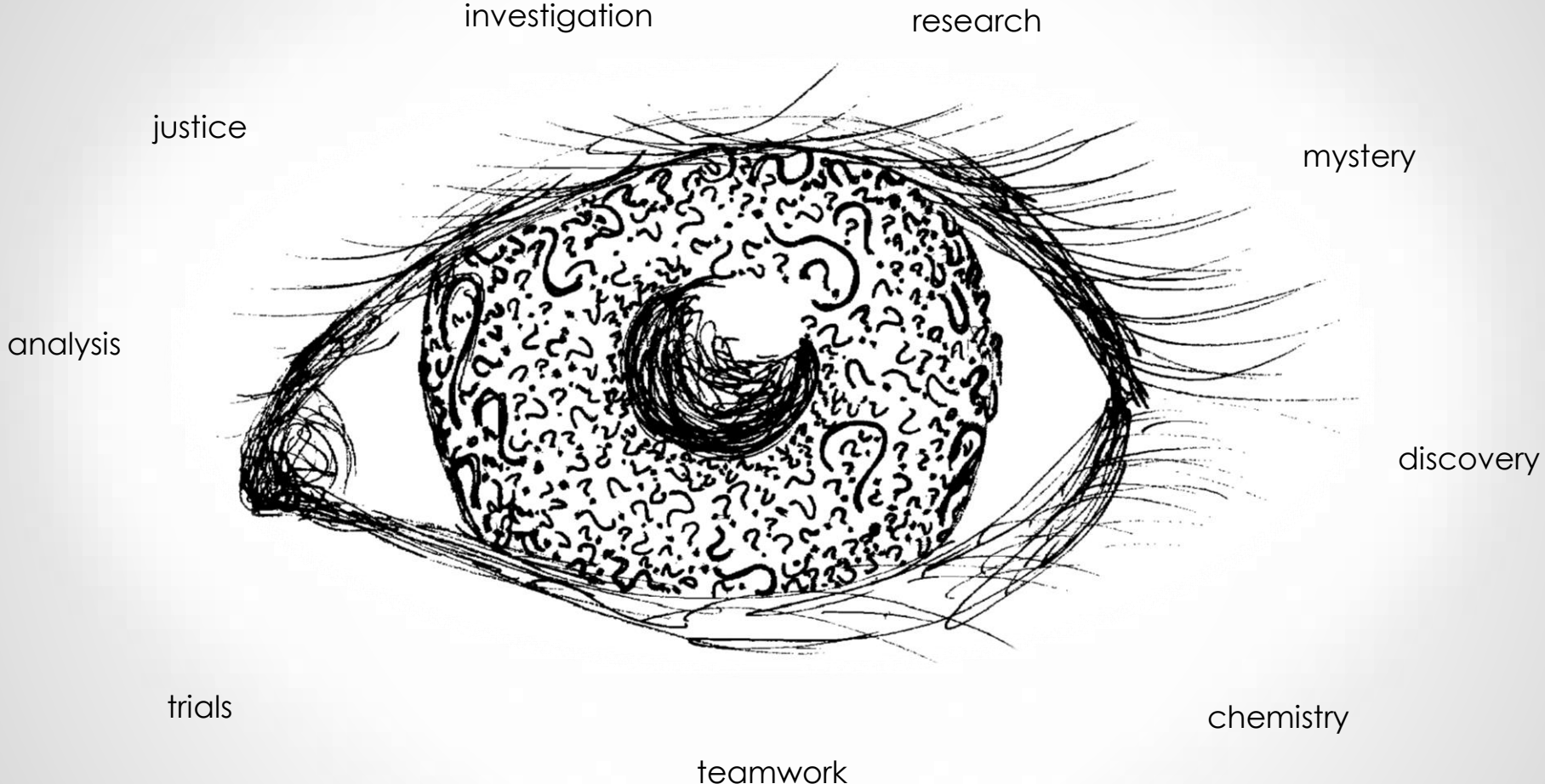
60,000 SF

3 stories + basement

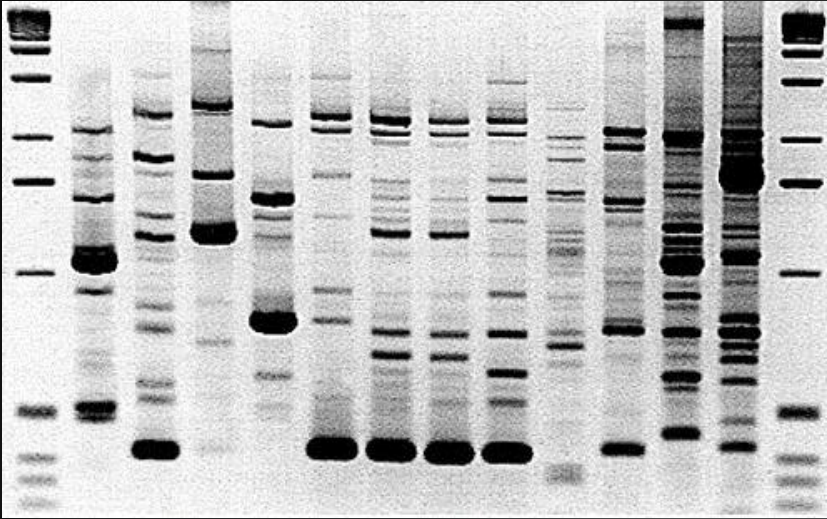
crime laboratory that houses forensic research labs, offices, a lecture hall, and conference rooms



CONCEPT | PROCESS



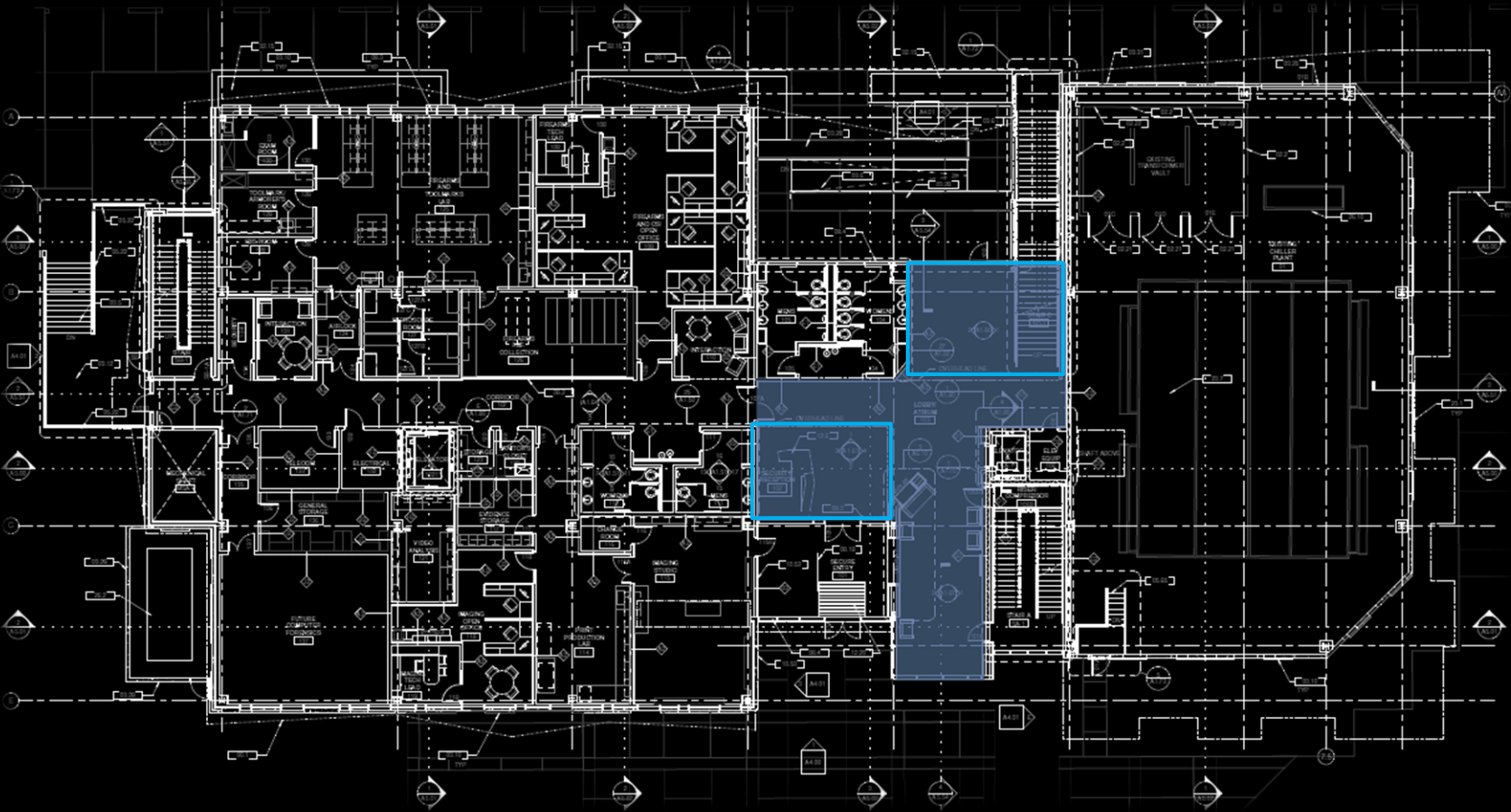
CONCEPT | IDENTITY



IDENTITY



LOBBY | LOCATION



LOBBY | DESIGN CONSIDERATIONS & CRITERIA

aesthetic appeal

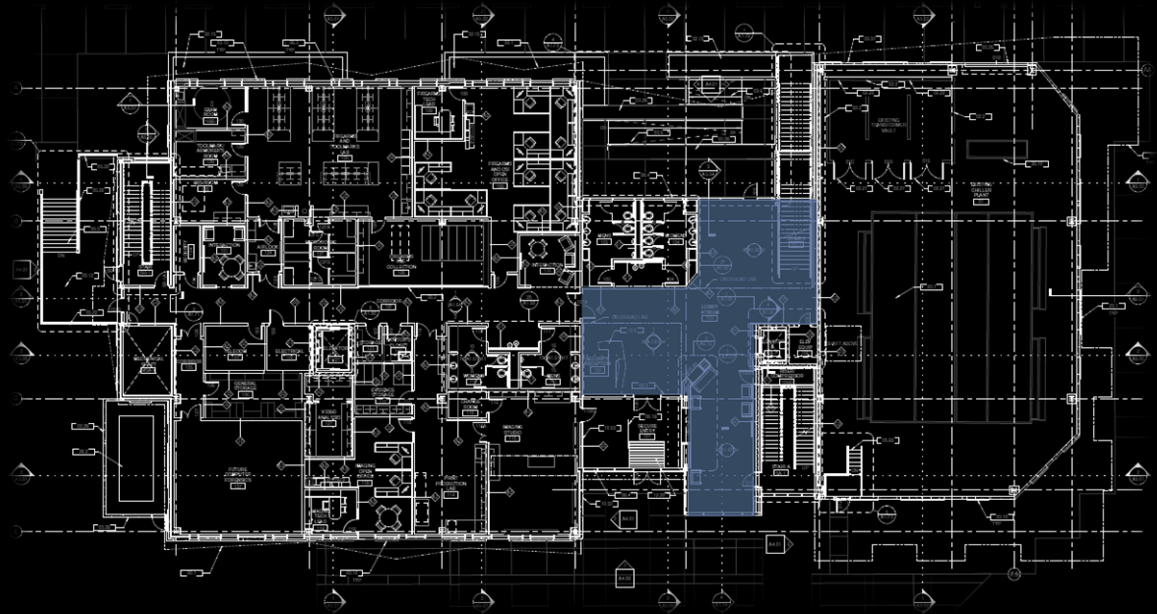
primary entrance

3 different lighting designs

tasks | transition, lounge

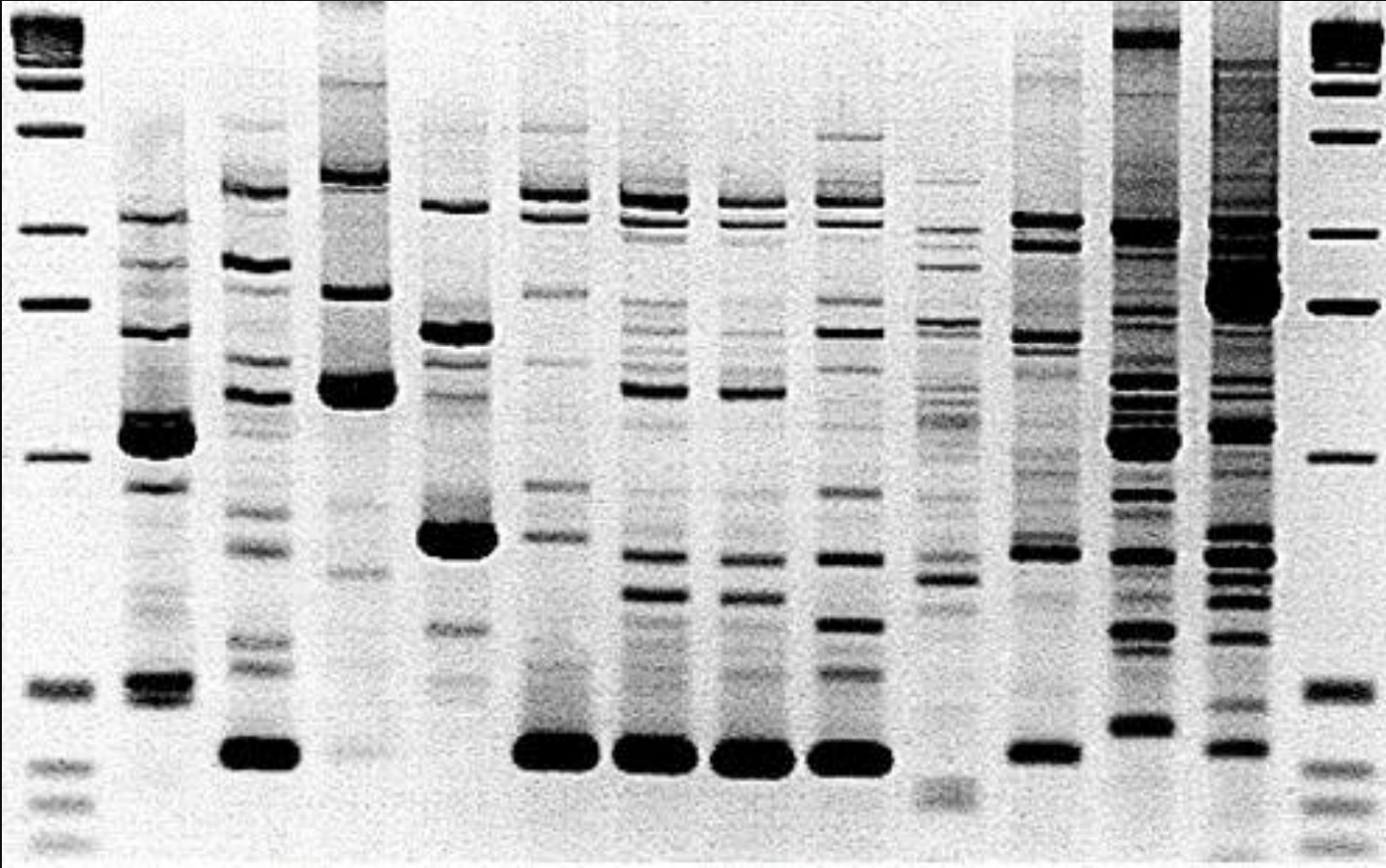
Illuminance | $E_h = 150 \text{ lux @ day}$
| $E_h = 50 \text{ lux @ night}$

LPD | 1.10 W/SF

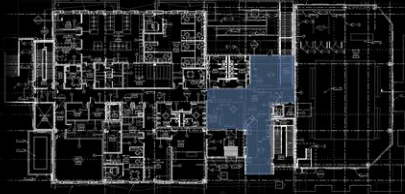
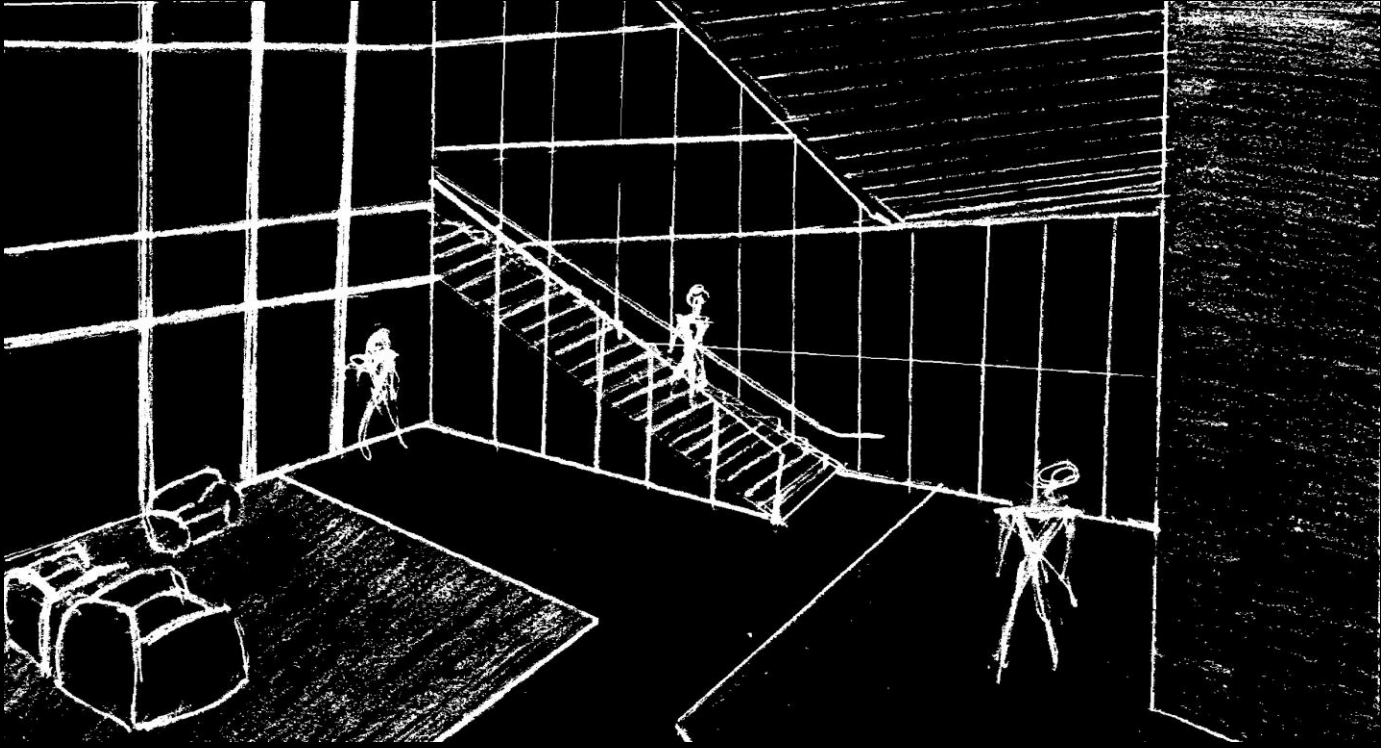




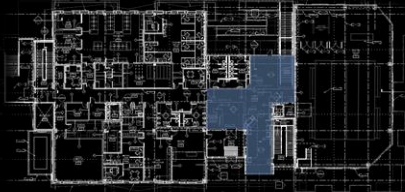
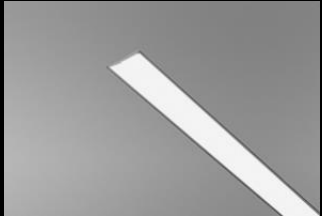
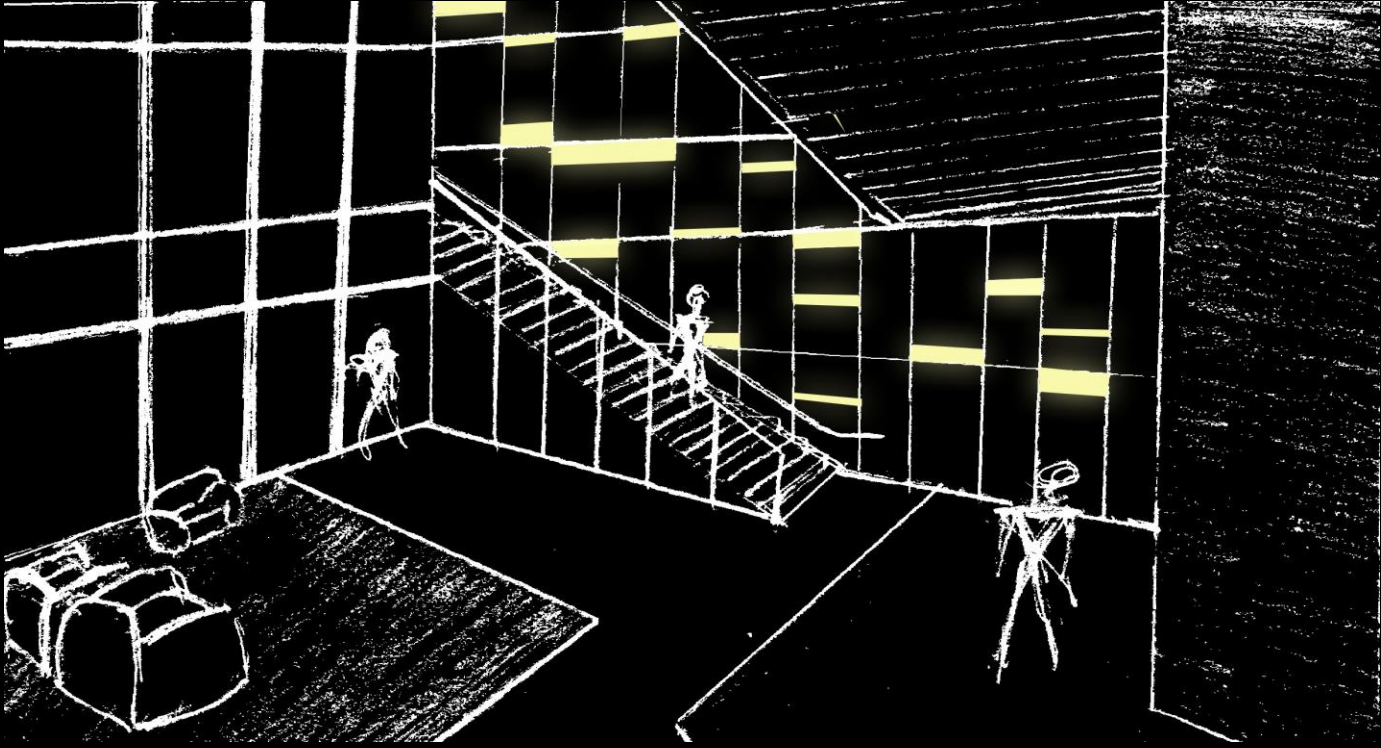
DNA



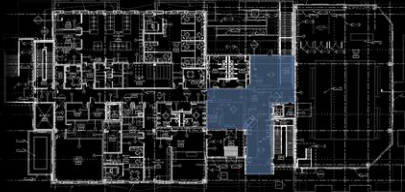
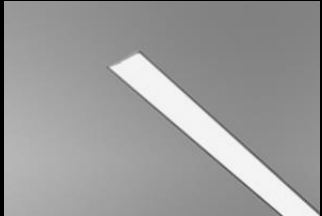
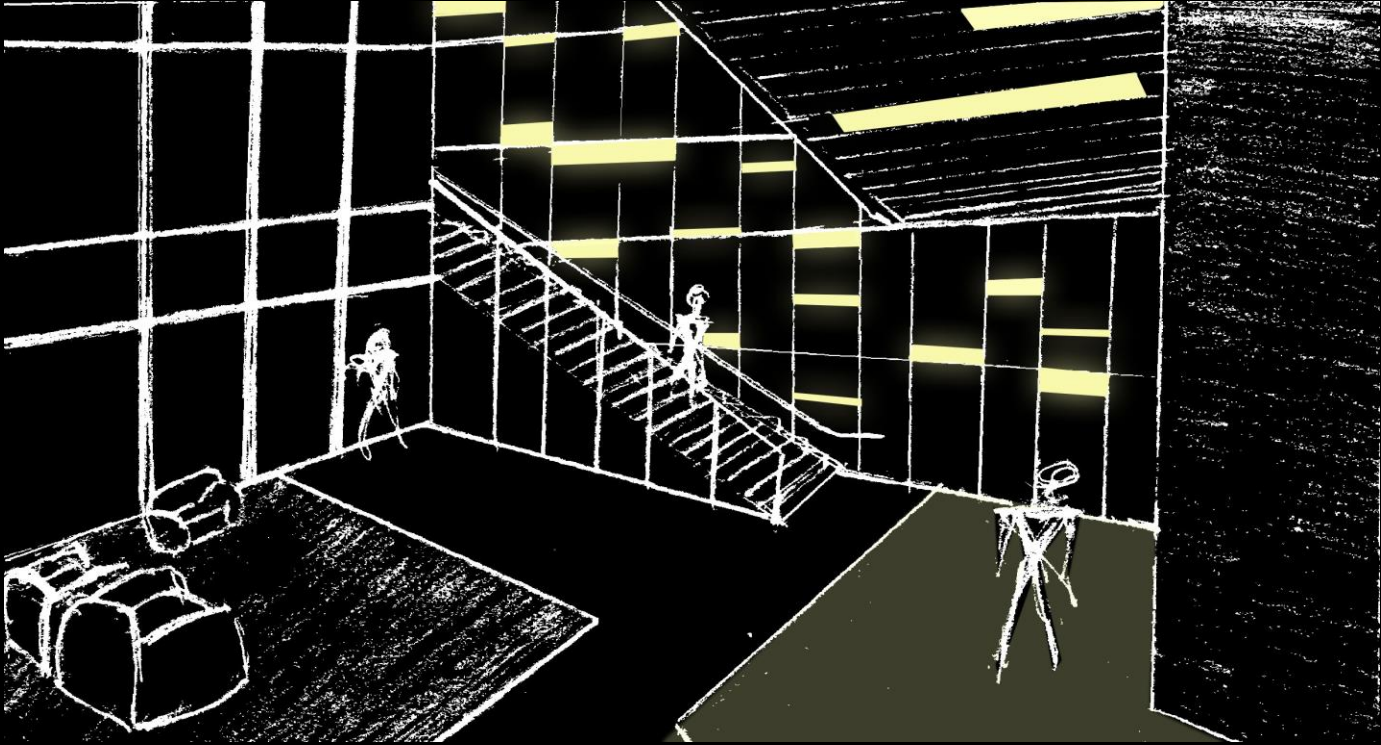
LOBBY | SCHEMATIC 1



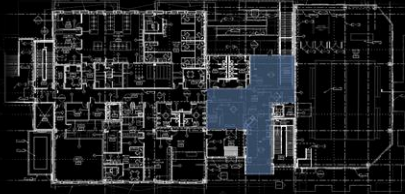
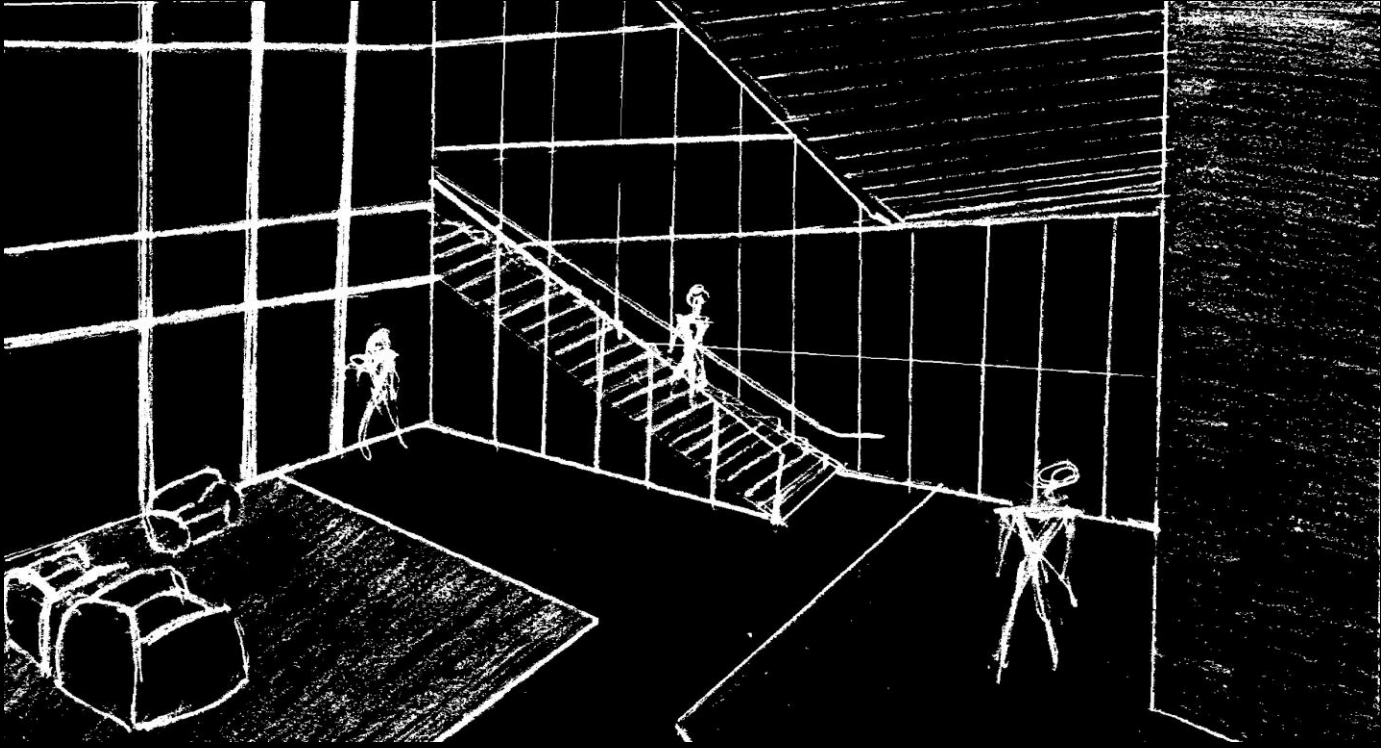
LOBBY | SCHEMATIC 1



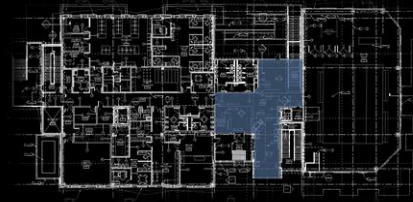
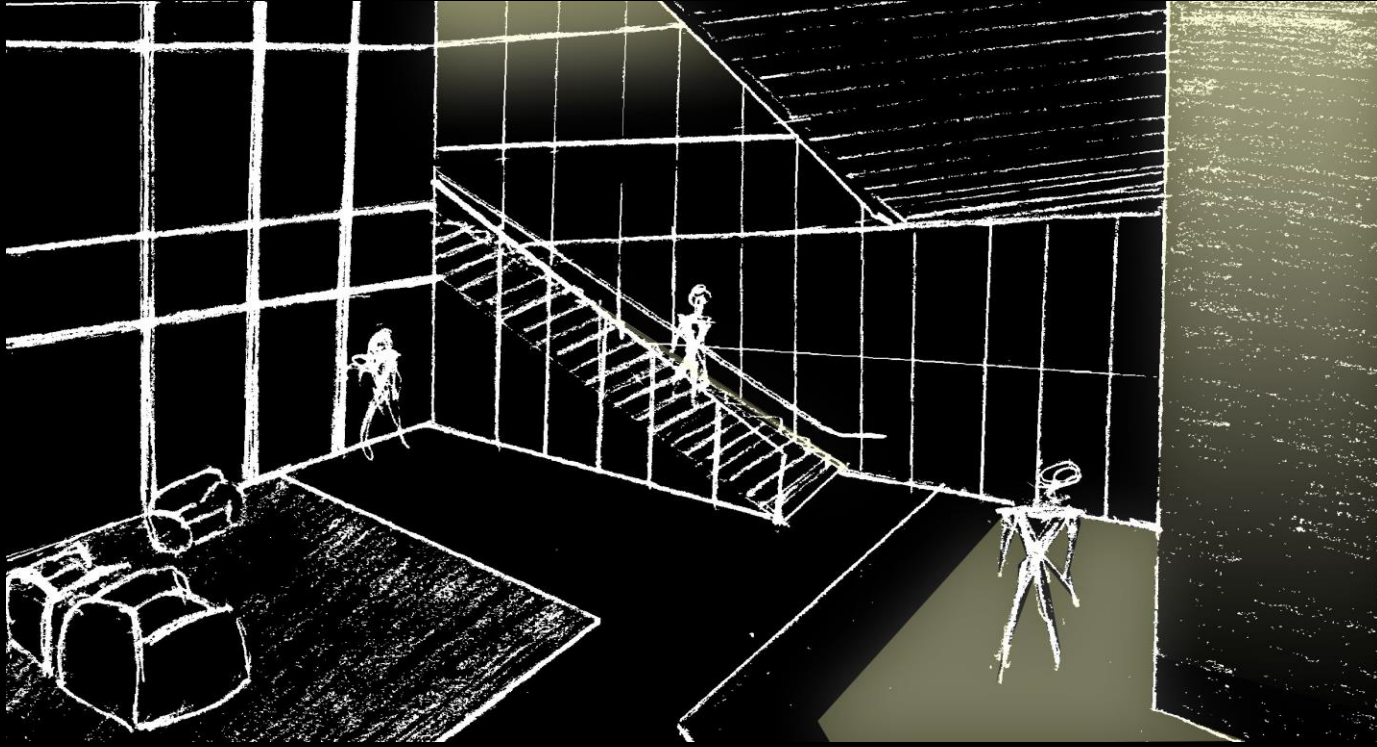
LOBBY | SCHEMATIC 1



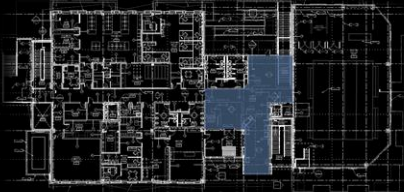
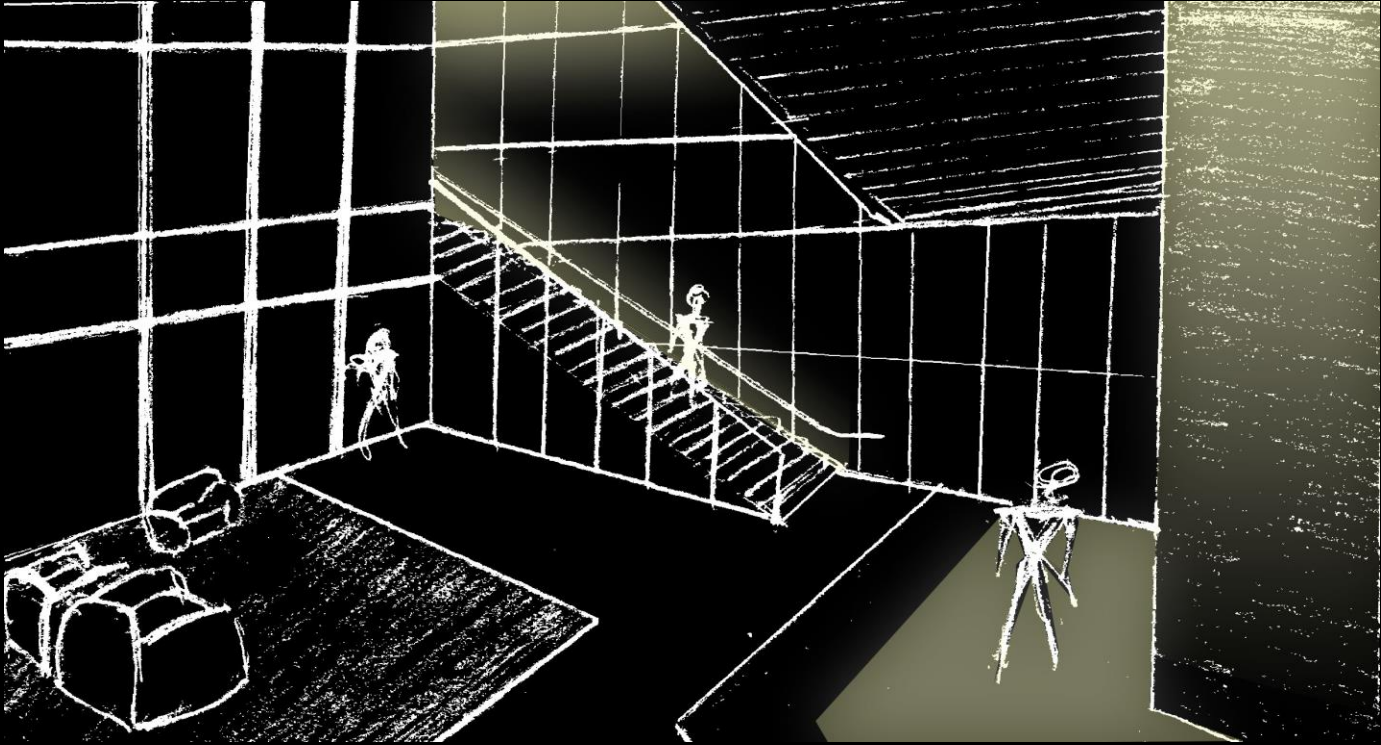
LOBBY | SCHEMATIC 2



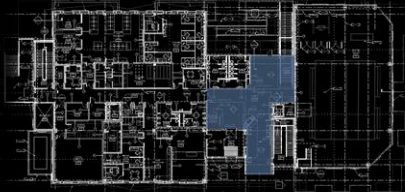
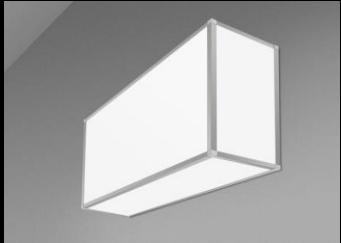
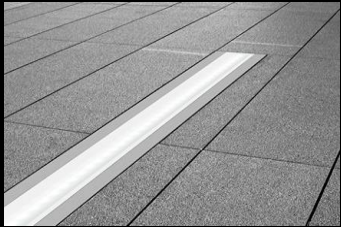
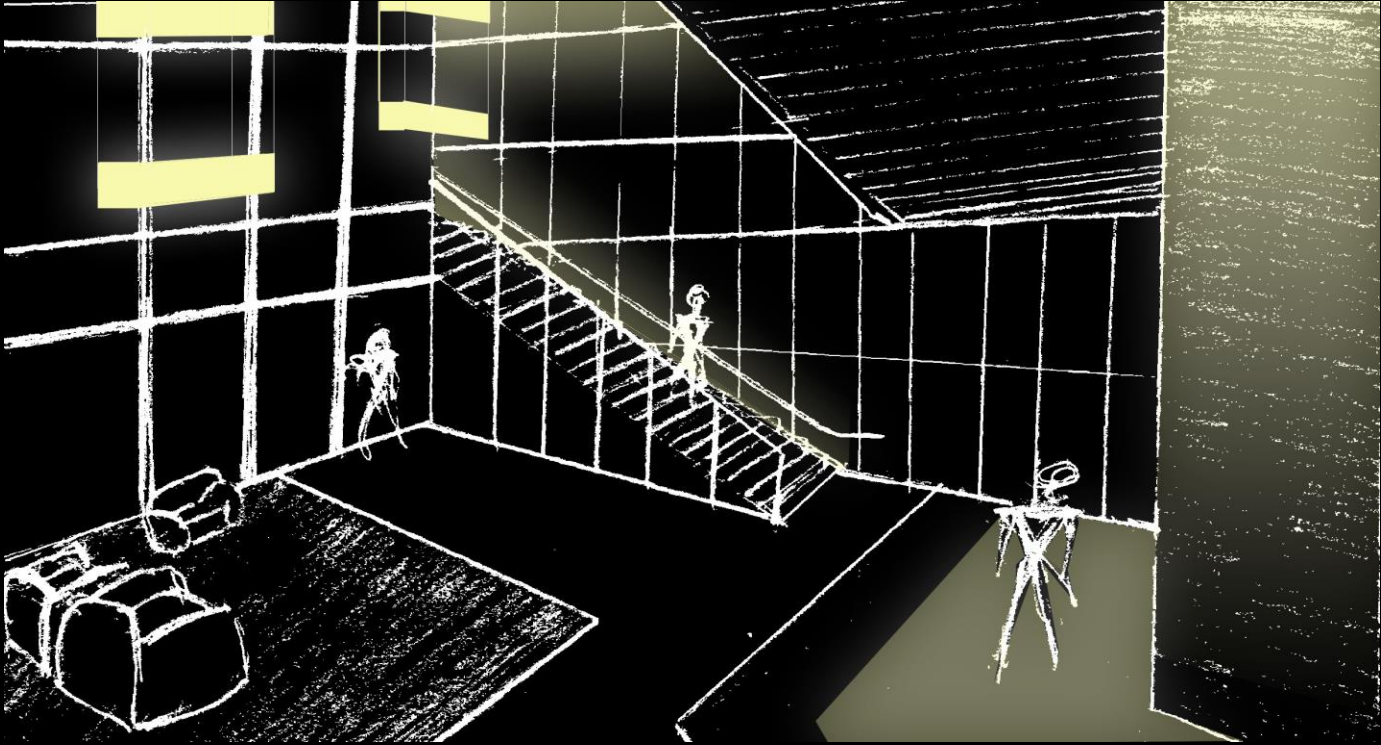
LOBBY | SCHEMATIC 2



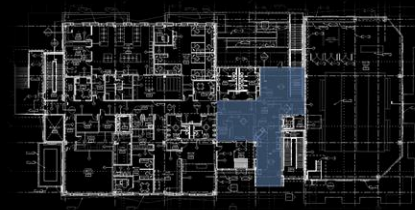
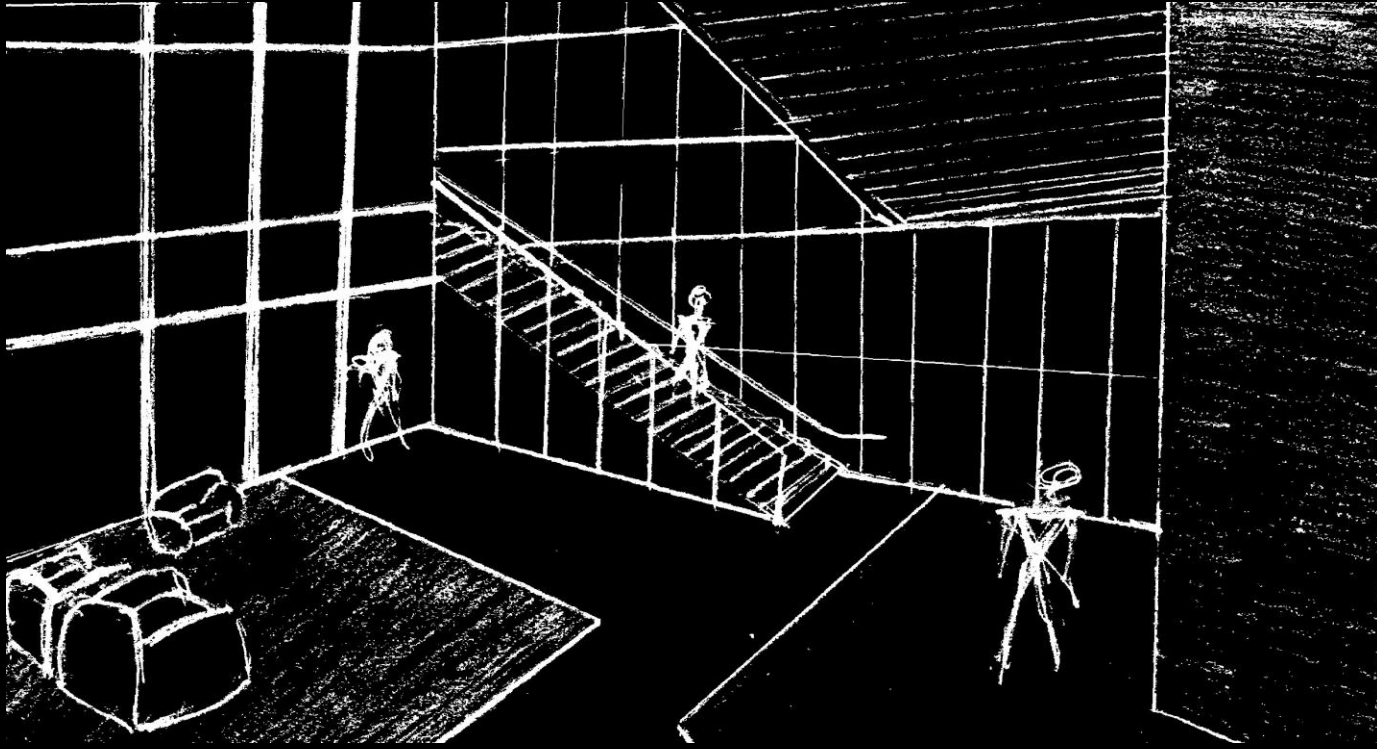
LOBBY | SCHEMATIC 2



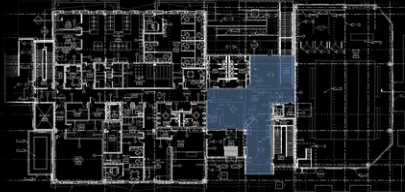
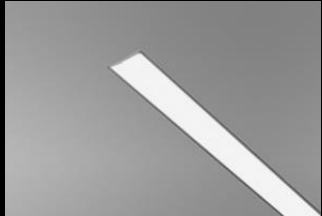
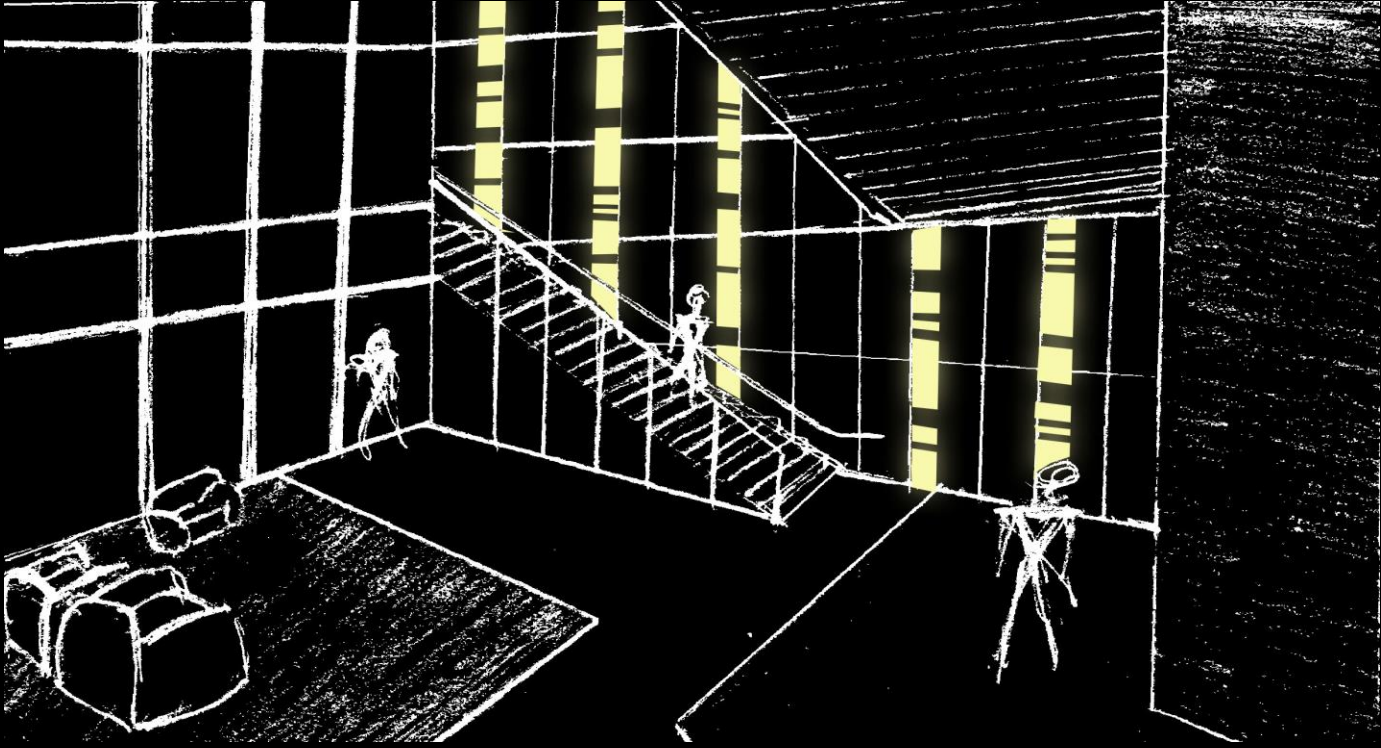
LOBBY | SCHEMATIC 2



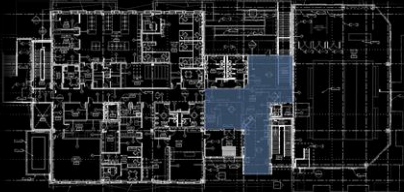
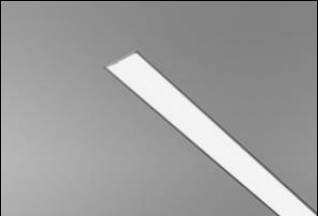
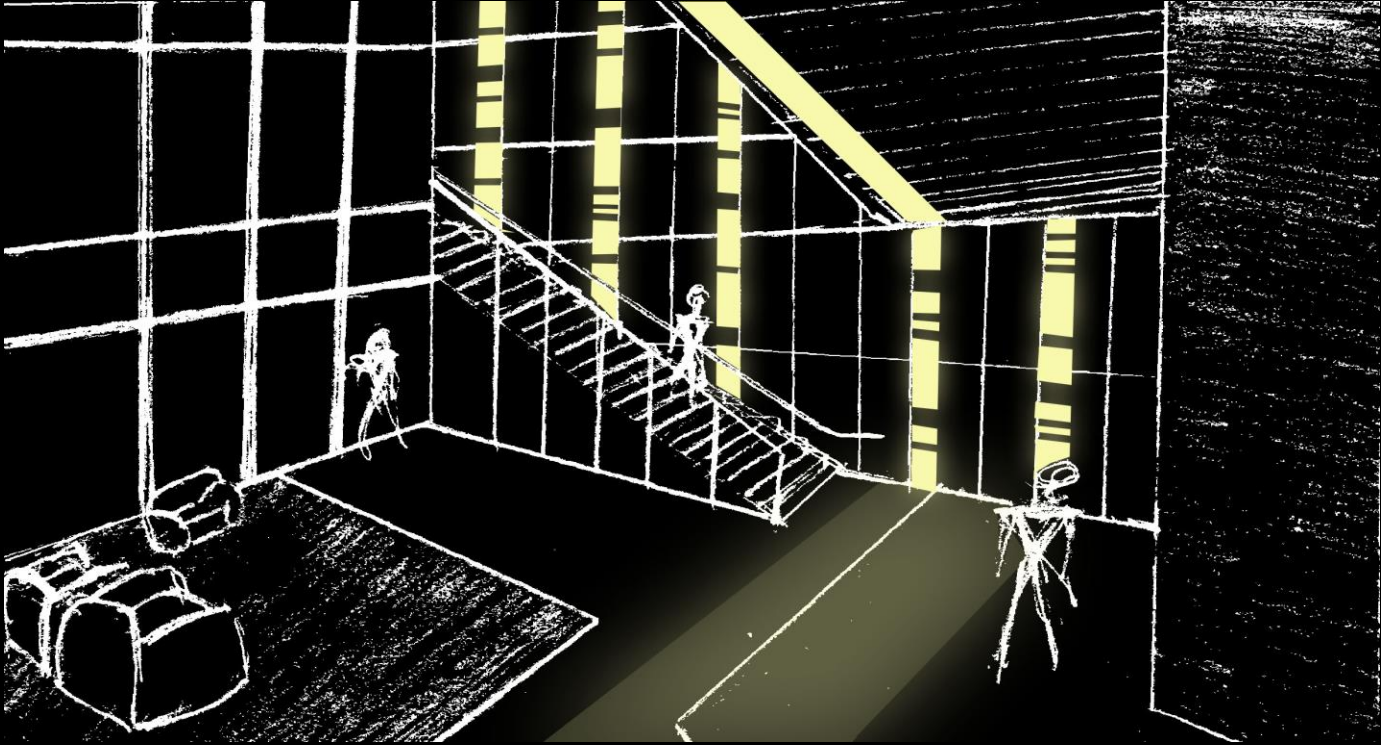
LOBBY | SCHEMATIC 3



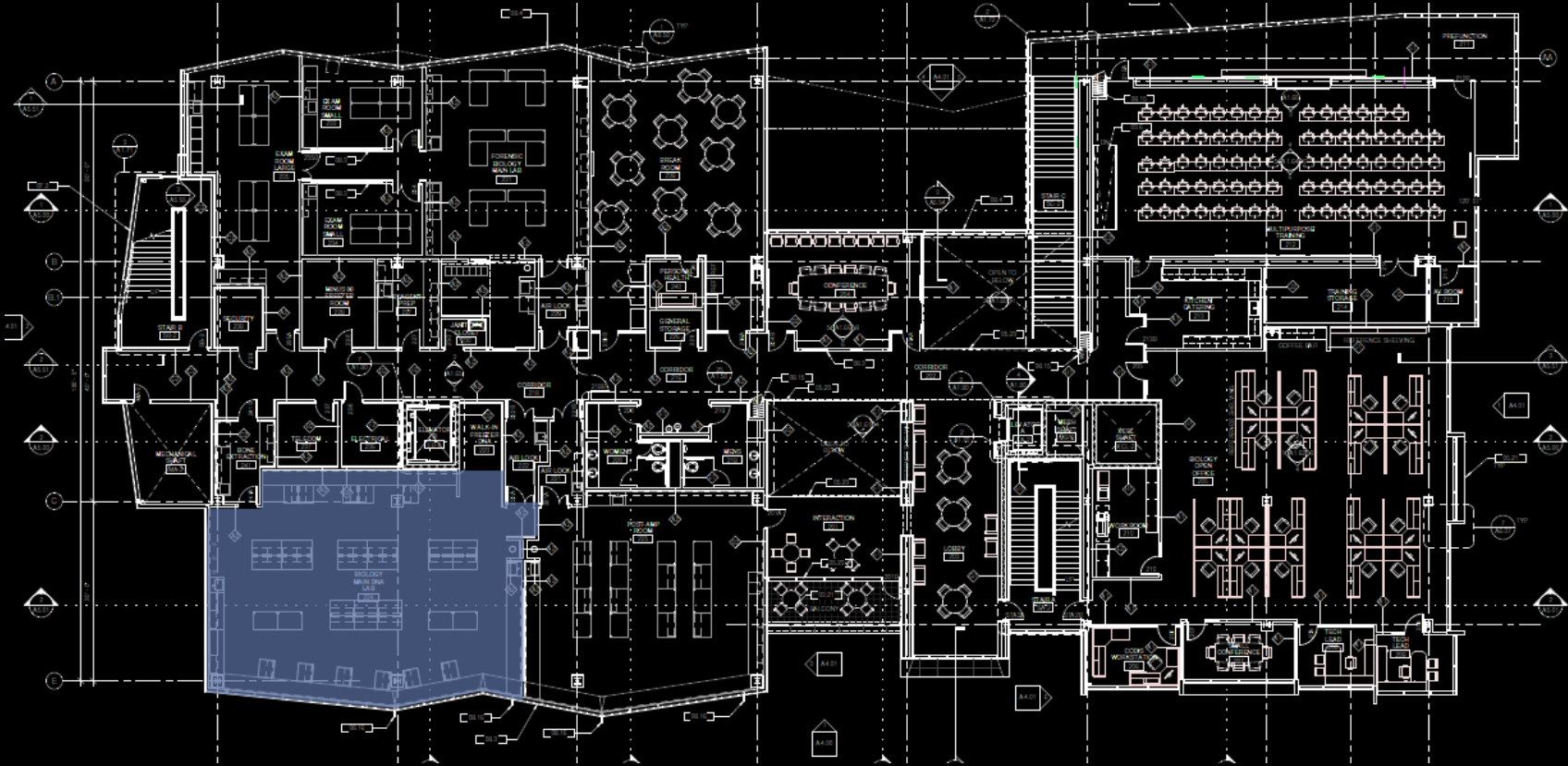
LOBBY | SCHEMATIC 3



LOBBY | SCHEMATIC 3



MAIN DNA LAB | LOCATION



MAIN DNA LAB | DESIGN CONSIDERATIONS & CRITERIA

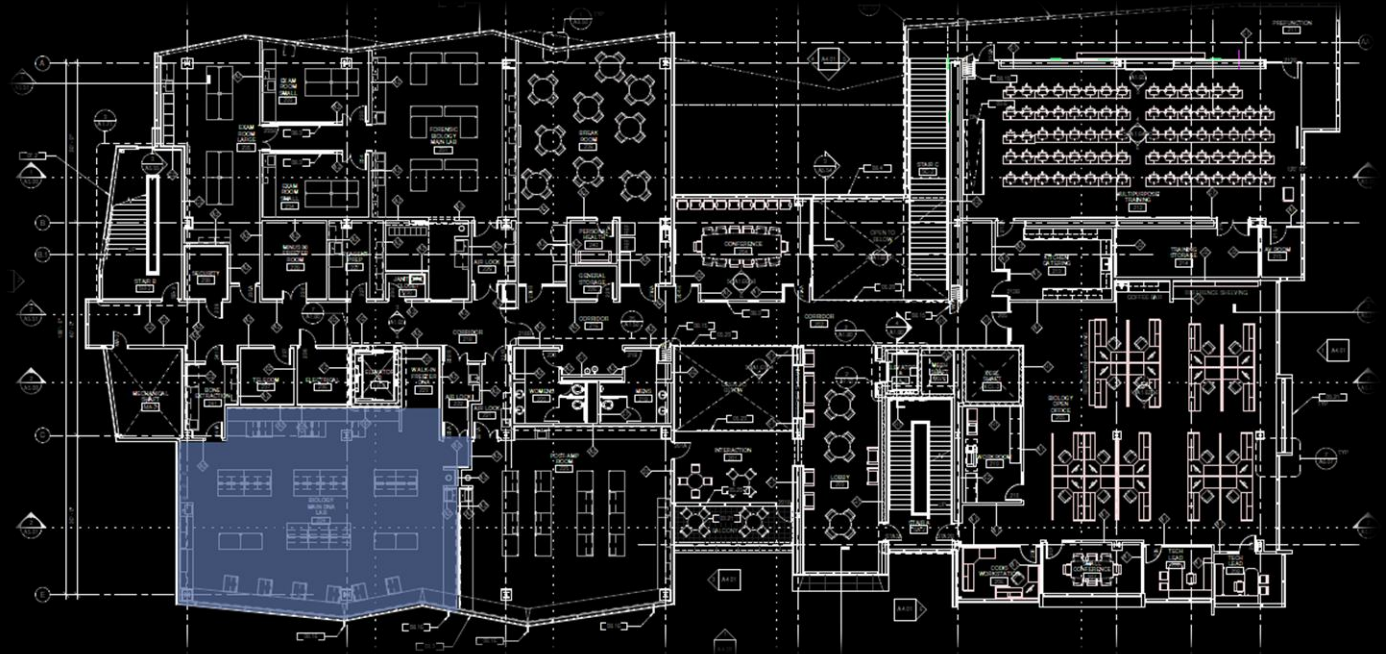
uniformity

Illuminance | $E_h = 500 \text{ lux}$
| $E_v = 150 \text{ lux}$

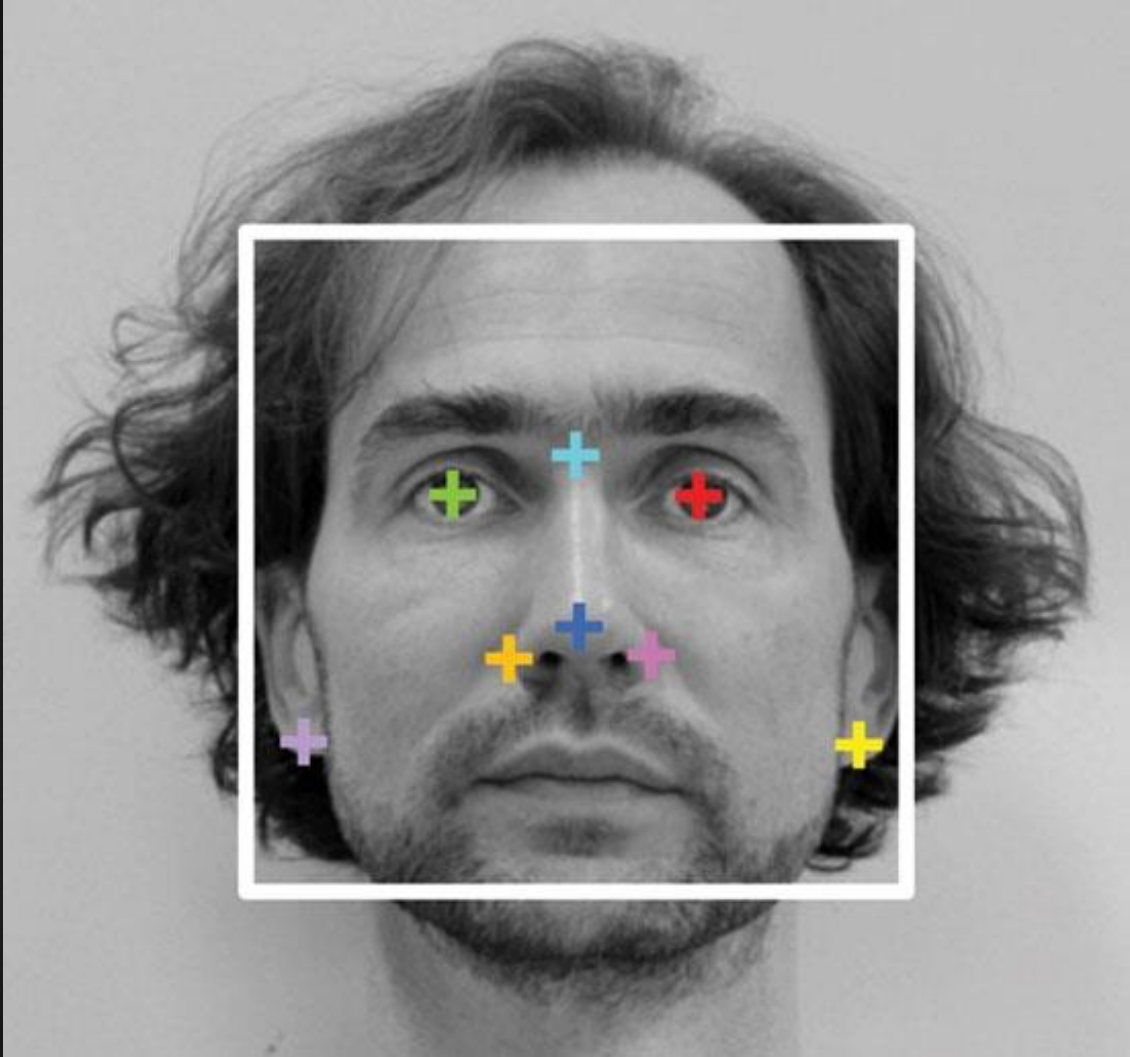
lamp type

LPD | 1.8 W/SF

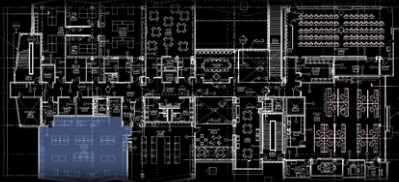
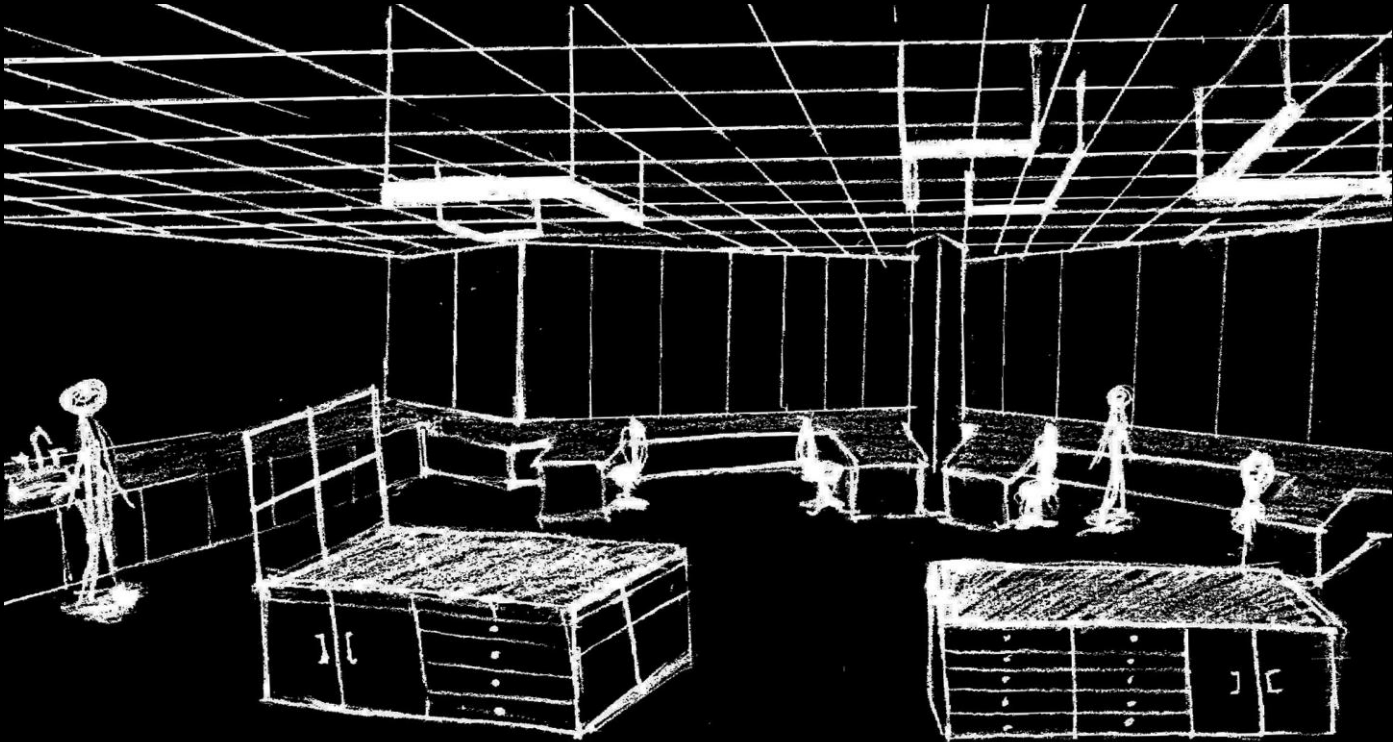
tasks | reading, writing, lab work



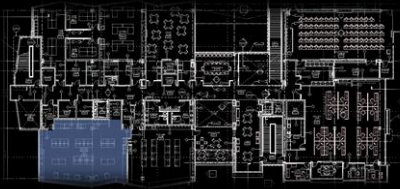
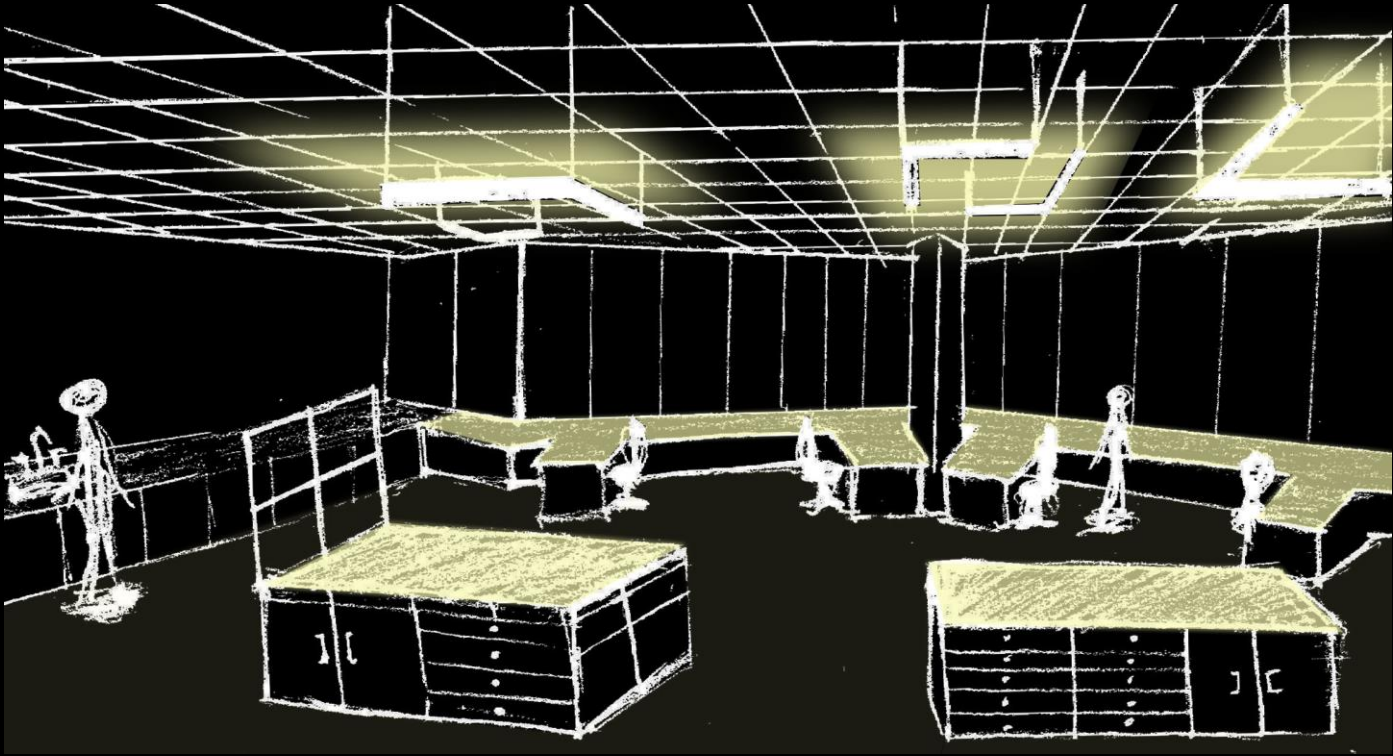
PROFILE



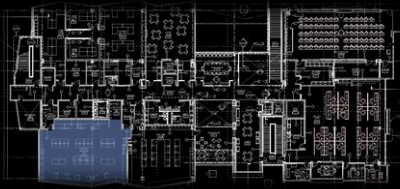
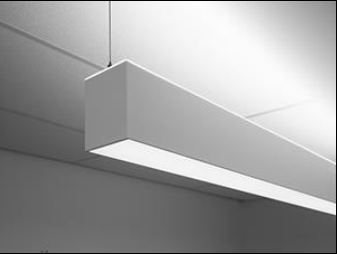
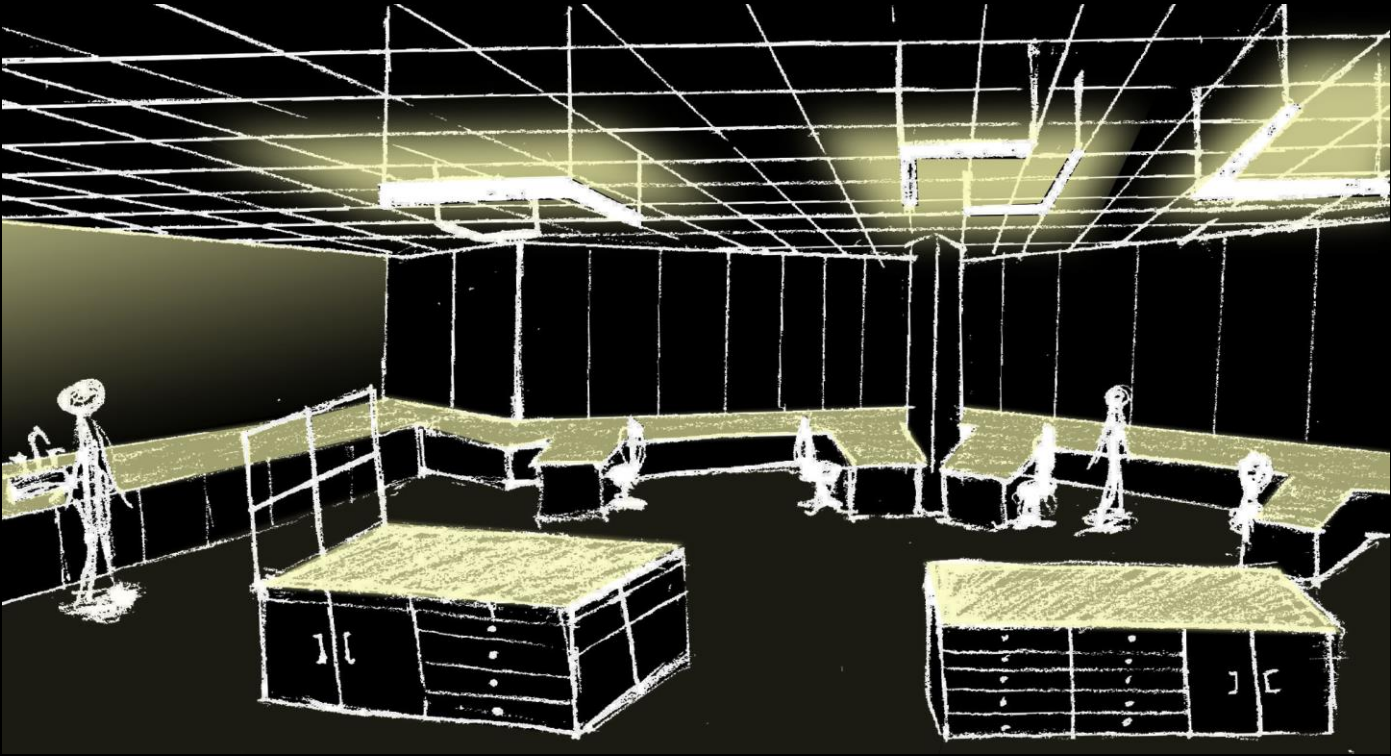
MAIN DNA LAB | SCHEMATIC



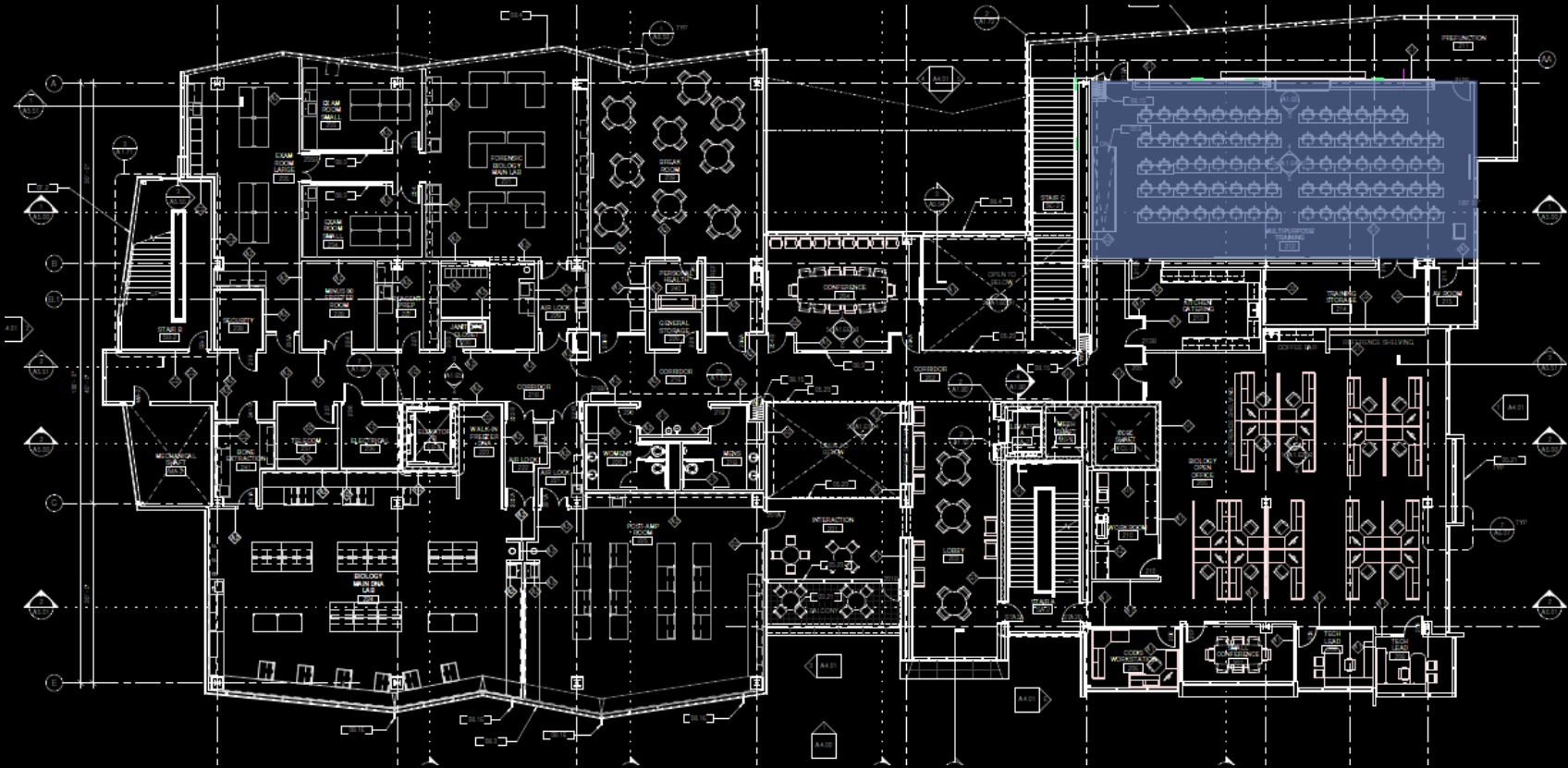
MAIN DNA LAB | SCHEMATIC



MAIN DNA LAB | SCHEMATIC



MULTIPURPOSE ROOM | LOCATION



MULTIPURPOSE ROOM | DESIGN CONSIDERATIONS & CRITERIA

lecture mode

Vs.

presentation mode

bright, uniform lighting

somber, darkly lit

tasks | reading, writing

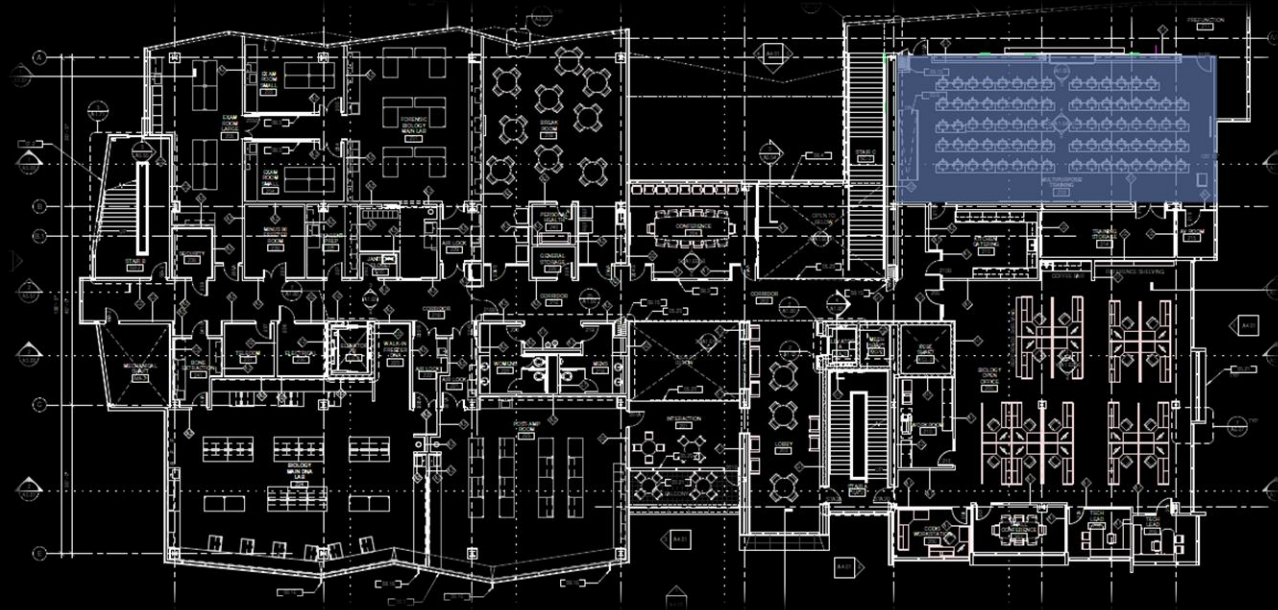
tasks | A/V

Illuminance levels | $E_h = 300 \text{ lux}$
| $E_v = 150 \text{ lux}$

Illuminance levels | $E_h = 50 \text{ lux}$
| $E_v = 15 \text{ lux}$

LPD | 1.4 W/SF

LPD | 1.4 W/SF



MULTIPURPOSE ROOM | CONCEPT

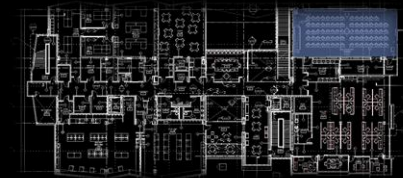
VICTIM



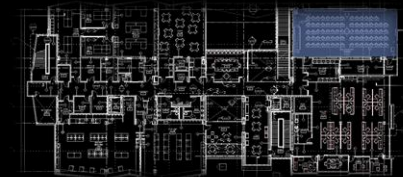
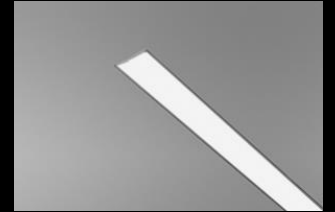
SUSPECT



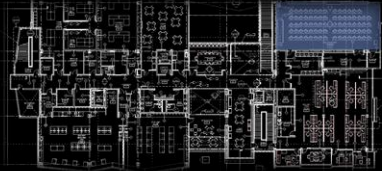
MULTIPURPOSE ROOM | SCHEMATIC | VICTIM



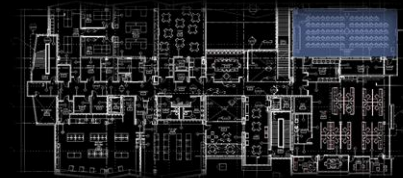
MULTIPURPOSE ROOM | SCHEMATIC | VICTIM



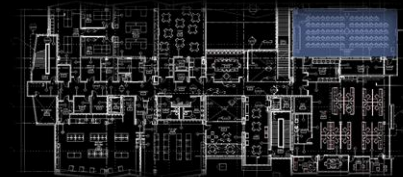
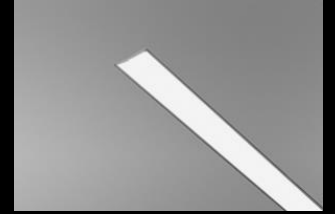
MULTIPURPOSE ROOM | SCHEMATIC | VICTIM



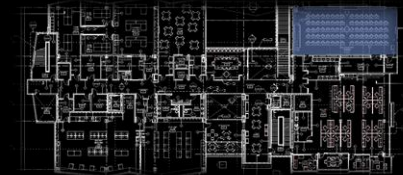
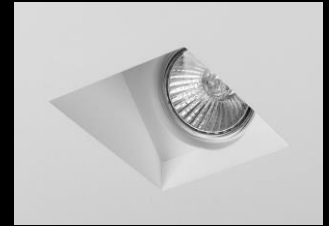
MULTIPURPOSE ROOM | SCHEMATIC | SUSPECT



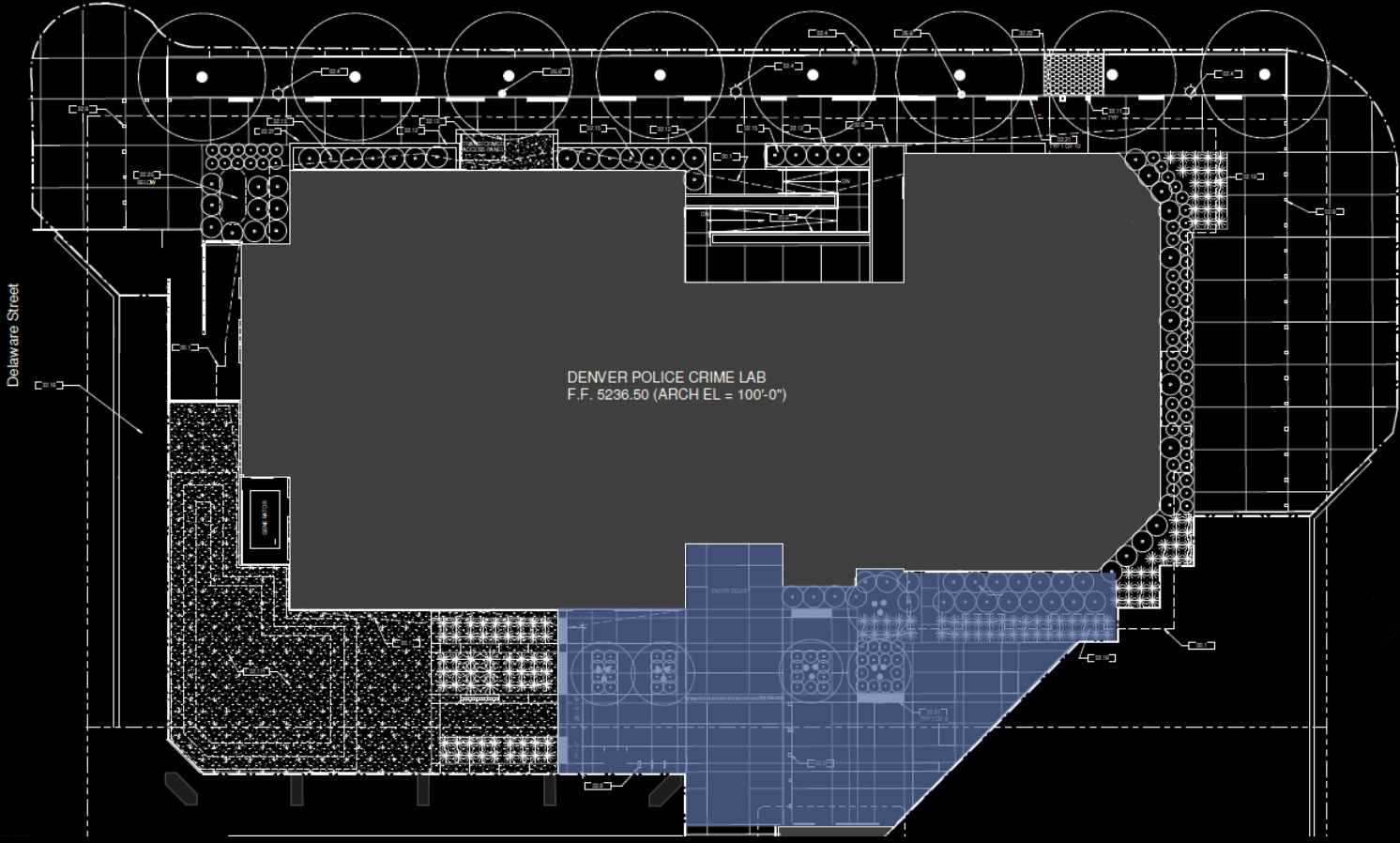
MULTIPURPOSE ROOM | SCHEMATIC | SUSPECT



MULTIPURPOSE ROOM | SCHEMATIC | SUSPECT



SOUTH PLAZA | LOCATION



SOUTH PLAZA | DESIGN CONSIDERATIONS & CRITERIA

psychological impression | relaxation

Illuminance | $E_h = 6 \text{ lux}$

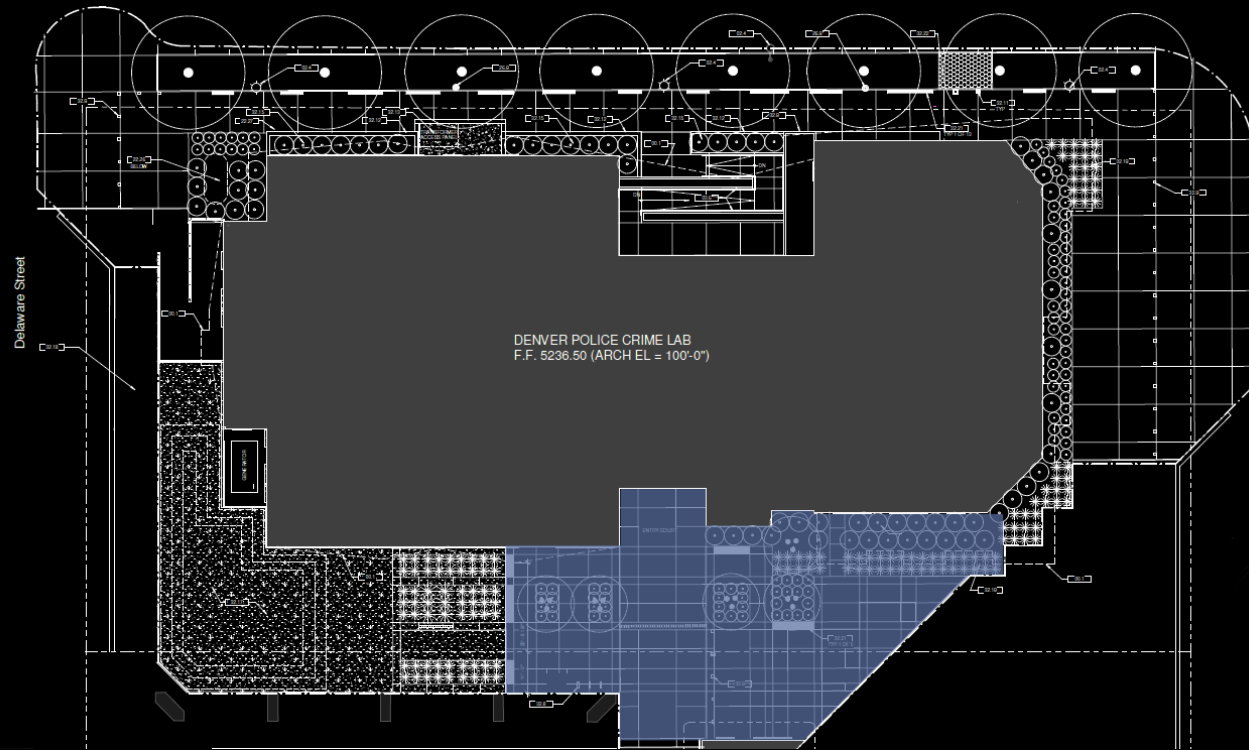
safety

LPD | $1,300 \text{ W base} + 0.2 \text{ W/SF}$

light trespass

power density

tasks | transition, lounge

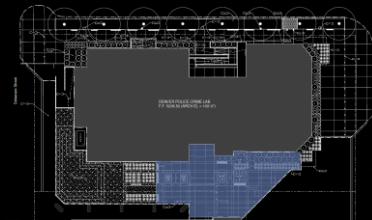
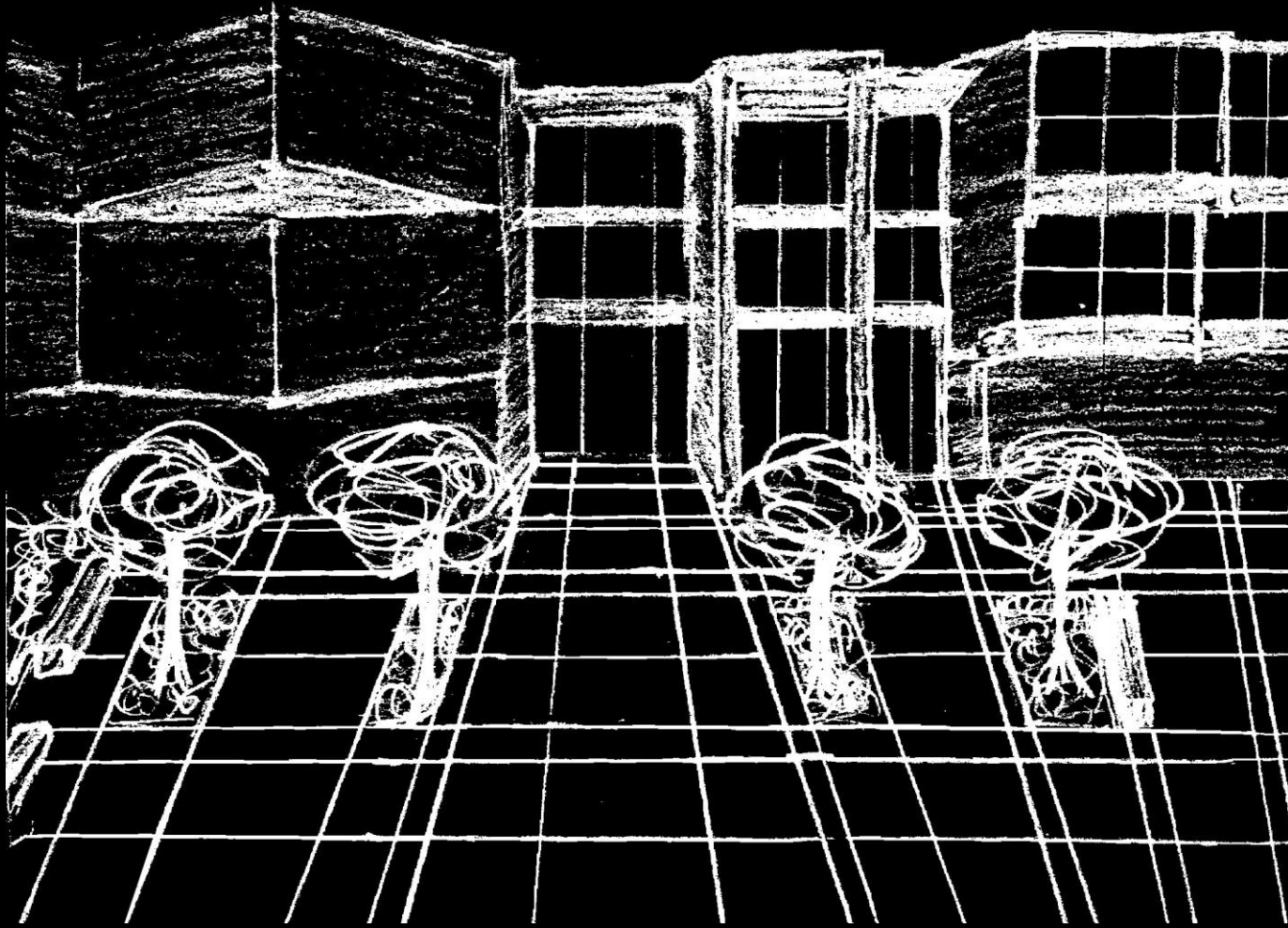


SOUTH PLAZA | CONCEPT

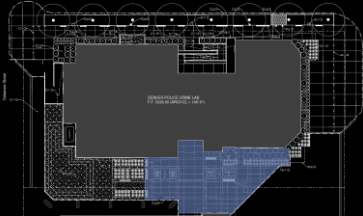
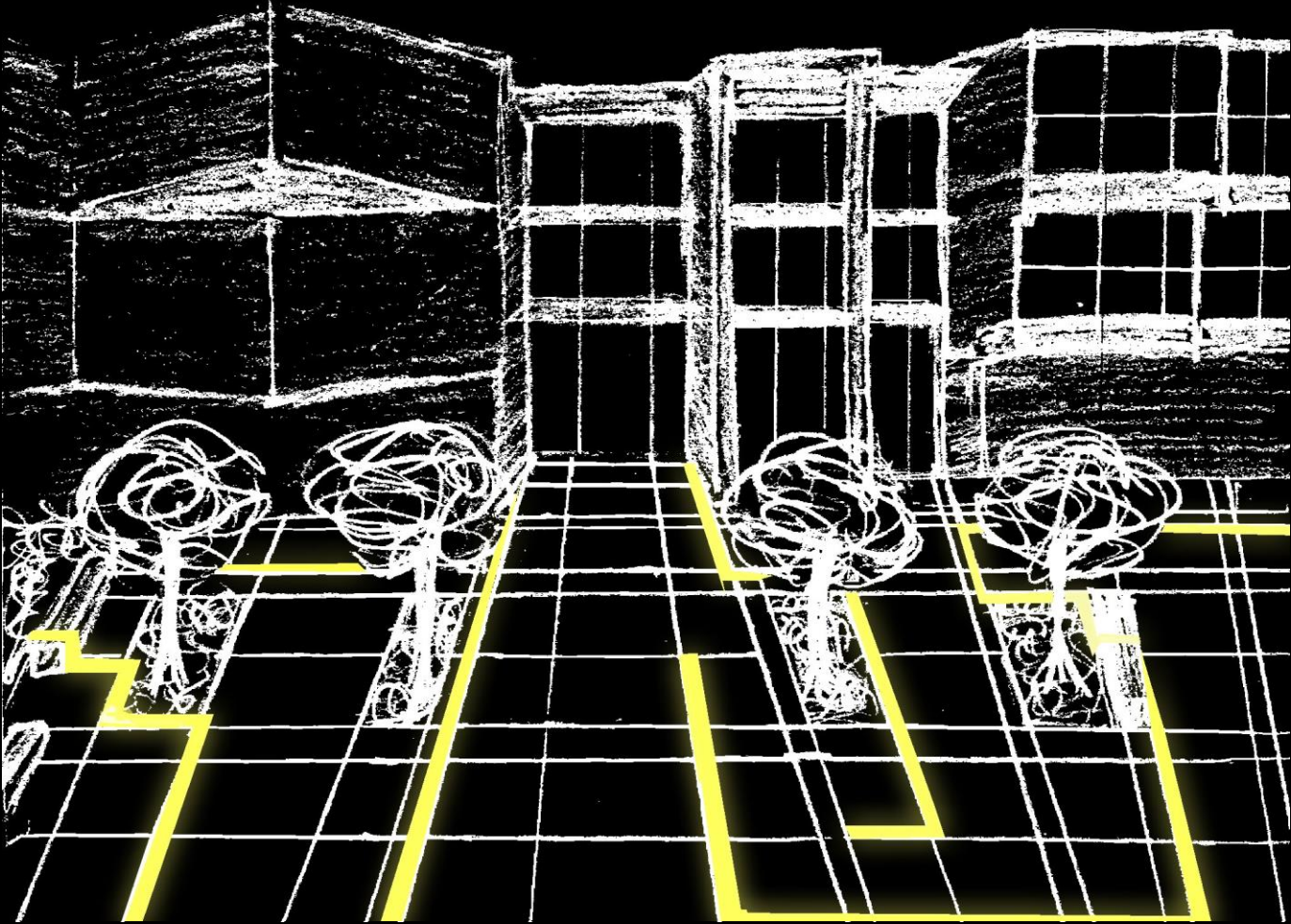
FINGERPRINT



SOUTH PLAZA | SCHEMATIC



SOUTH PLAZA | SCHEMATIC



TECHNICAL REPORT IV.A | CONCLUSION



SUPPORT | STAIR SECTION

